



Professional Manufacturer of Solar Panel

CHINA SOLAR LTD

Green Economy

Green Energy

Long Solar Panel

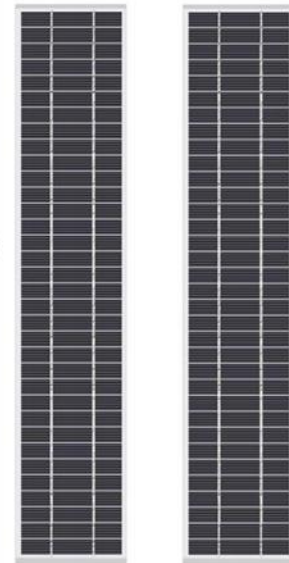
Photovoltaic glass solar panel is built with the latest most efficient monocrystalline silicon solar cell, with high light transmittance, high strength and durability.

Long solar panels are suitable for street lights, garden lights, balconies, billboards, skylights, etc.

Long solar panels can be installed/fixed in skylights of laminated safety glass to adapt to a building-integrated photovoltaic (BIPV) solar skylight solution or to suit the project you are developing.

Solar Panel Application:

- **Long solar panels for glass skylight**
- **Long solar panels for agriculture canopy**
- **Long solar panels for roofing skylight**
- **Long solar panels for bus stops, shelter and balconies**
- **Long solar panels for PV carports and canopies**
- **Long solar panels for street lights, garden lights**
- **Other applications**



CHINA SOLAR LTD

Email: market@solars-china.com

Website: www.solars-china.com

TEL: +86 755 83515659

Green Energy

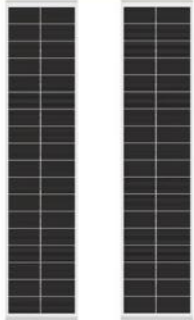
Green Economy

Designer and Manufacturer of Solar Panel

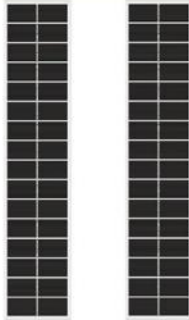


Photovoltaic Glass

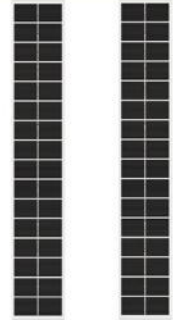
Long Solar Panel



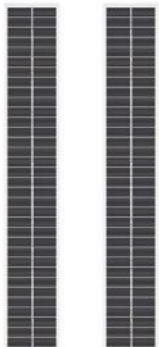
- Maximum Power(Pm): 3W
- Operating Voltage(Vmp): 9V
- Operating Current(Imp): 333mA
- Dimension: 310x70x4.5mm
- Model No.: KS-M31070G



- Maximum Power(Pm): 4.8W
- Operating Voltage(Vmp): 8V
- Operating Current(Imp): 600mA
- Dimension: 390x80x4.5mm
- Model No.: KS-M39080G



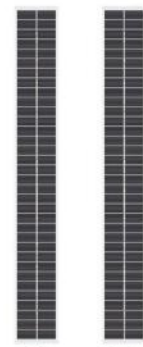
- Maximum Power(Pm): 6W
- Operating Voltage(Vmp): 8V
- Operating Current(Imp): 825mA
- Dimension: 490x80x4.5mm
- Model No.: KS-M49080G



- Maximum Power(Pm): 6.5W
- Operating Voltage(Vmp): 18V
- Operating Current(Imp): 361mA
- Dimension: 535x85x4.5mm
- Model No.: KS-M53585G



- Maximum Power(Pm): 3.24W
- Operating Voltage(Vmp): 18V
- Operating Current(Imp): 180mA
- Dimension: 500x50x4.5mm
- Model No.: KS-M50050G



- Maximum Power(Pm): 4W
- Operating Voltage(Vmp): 18V
- Operating Current(Imp): 222mA
- Dimension: 500x65x4.5mm
- Model No.: KS-M50065G

Product Description:

Photovoltaic solar panel with high transmittance, high strength and durability.

Cell Type: Monocrystalline solar cells.

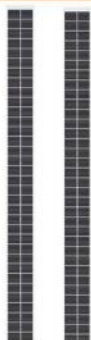
Encapsulation Methods: Photovoltaic Glass, White Coated

Glass thickness: 3.2mm, Low iron, Coated Tempered Glass.

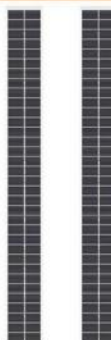
Operation life: 15 years - 20 years

Standard test conditions(STC): AM1.5, Irradiance:1000W/㎡, Module temperature:25°C

Long Solar Panel



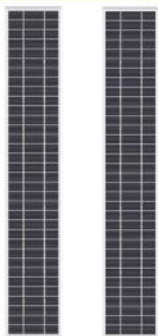
- Maximum Power(Pm): 3.5W
- Operating Voltage(Vmp): 18V
- Operating Current(Imp): 194mA
- Dimension: 600x50x5mm
- Model No.: KS-M60050G



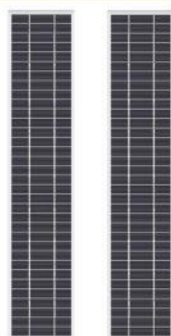
- Maximum Power(Pm): 5W
- Operating Voltage(Vmp): 18V
- Operating Current(Imp): 278mA
- Dimension: 600x65x4.5mm
- Model No.: KS-M60065G



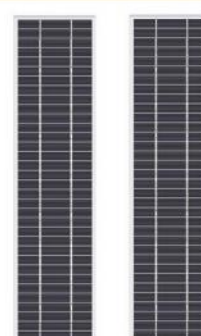
- Maximum Power(Pm): 7.8W
- Operating Voltage(Vmp): 12V
- Operating Current(Imp): 650mA
- Dimension: 600x80x4.5mm
- Model No.: KS-M60080G



- Maximum Power(Pm): 8.7W
- Operating Voltage(Vmp): 12V
- Operating Current(Imp): 722mA
- Dimension: 600x100x4.5mm
- Model No.: KS-M600100G



- Maximum Power(Pm): 10W
- Operating Voltage(Vmp): 18V
- Operating Current(Imp): 556mA
- Dimension: 600x120x4.5mm
- Model No.: KS-M600120G



- Maximum Power(Pm): 13W
- Operating Voltage(Vmp): 18V
- Operating Current(Imp): 722mA
- Dimension: 600x150x4.5mm
- Model No.: KS-M600150G

Product Description:

Photovoltaic solar panel with high transmittance, high strength and durability.

Cell Type: Monocrystalline solar cells.

Encapsulation Methods: Photovoltaic Glass, White Coated

Glass thickness: 3.2mm, Low iron, Coated Tempered Glass.

Operation life: 15 years - 20 years

Standard test conditions(STC): AM1.5, Irradiance:1000W/m², Module temperature:25°C



CHINA SOLAR

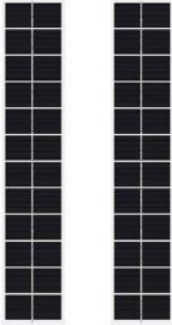
CHINA SOLAR LTD

Green Energy

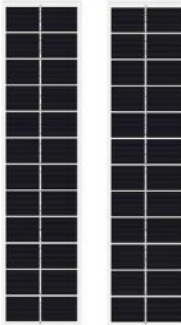
Photovoltaic Glass

Green Economy

Long Solar Panel



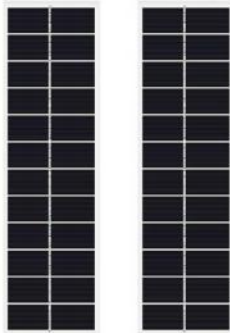
- Maximum Power(Pm): 1.12W
- Operating Voltage(Vmp): 6V
- Operating Current(Imp): 186mA
- Dimension: 212x40x4.5mm
- Model No.: KS-M21240G



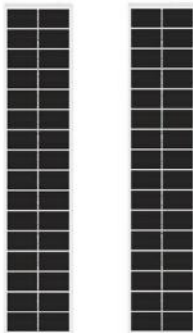
- Maximum Power(Pm): 1.7W
- Operating Voltage(Vmp): 6V
- Operating Current(Imp): 281mA
- Dimension: 212x60x4.5mm
- Model No.: KS-M21260G



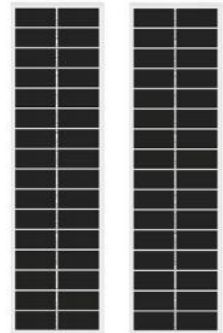
- Maximum Power(Pm): 2.8W
- Operating Voltage(Vmp): 9V
- Operating Current(Imp): 311mA
- Dimension: 260x80x4.5mm
- Model No.: KS-M26080G



- Maximum Power(Pm): 3.2W
- Operating Voltage(Vmp): 6V
- Operating Current(Imp): 533mA
- Dimension: 280x80x4.5mm
- Model No.: KS-M28080G



- Maximum Power(Pm): 2.5W
- Operating Voltage(Vmp): 8V
- Operating Current(Imp): 313mA
- Dimension: 290x60x4.5mm
- Model No.: KS-M29060G



- Maximum Power(Pm): 3.5W
- Operating Voltage(Vmp): 8V
- Operating Current(Imp): 438mA
- Dimension: 290x80x4.5mm
- Model No.: KS-M29080G

Product Description:

Photovoltaic solar panel with high transmittance, high strength and durability.

Cell Type: Monocrystalline solar cells.

Encapsulation Methods: Photovoltaic Glass, White Coated

Glass thickness: 3.2mm, Low iron, Coated Tempered Glass.

Operation life: 15 years - 20 years

Standard test conditions(STC): AM1.5, Irradiance:1000W/m², Module temperature:25°C

CHINA SOLAR LTD

Email: market@solars-china.com

Website: www.solars-china.com

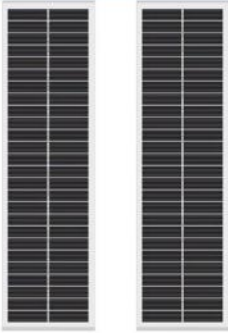
TEL: +86 755 83515659

Green Energy

Green Economy

Professional Manufacturer of Solar Panel

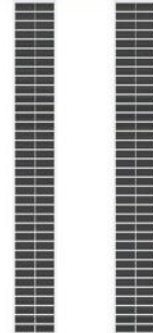
Long Solar Panel



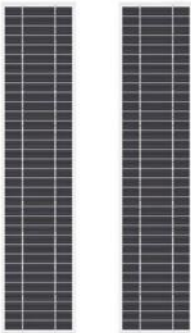
- Maximum Power(Pm): 2.5W
- Operating Voltage(Vmp): 18V
- Operating Current(Imp): 192mA
- Dimension: 300x85x4.5mm
- Model No.: KS-M30085G



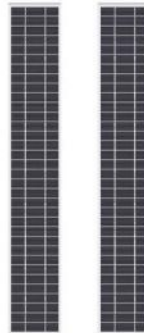
- Maximum Power(Pm): 5W
- Operating Voltage(Vmp): 13V
- Operating Current(Imp): 385mA
- Dimension: 460x98x4.5mm
- Model No.: KS-M46098G



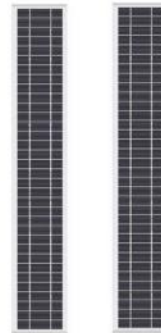
- Maximum Power(Pm): 10W
- Operating Voltage(Vmp): 18V
- Operating Current(Imp): 556mA
- Dimension: 770x100x4.5mm
- Model No.: KS-M770100G



- Maximum Power(Pm): 20W
- Operating Voltage(Vmp): 18V
- Operating Current(Imp): 1.11A
- Dimension: 750x168x4.5mm
- Model No.: KS-M750168G



- Maximum Power(Pm): 21.5W
- Operating Voltage(Vmp): 18V
- Operating Current(Imp): 1.19A
- Dimension: 950x150x4.5mm
- Model No.: KS-M950150G



- Maximum Power(Pm): 25W
- Operating Voltage(Vmp): 18V
- Operating Current(Imp): 1.39A
- Dimension: 1000x168x4.5mm
- Model No.: KS-M1000168G

Product Description:

Photovoltaic solar panel with high transmittance, high strength and durability.

Cell Type: Monocrystalline solar cells.

Encapsulation Methods: Photovoltaic Glass, White Coated

Glass thickness: 3.2mm, Low iron, Coated Tempered Glass.

Operation life: 15 years - 20 years

Standard test conditions(STC): AM1.5, Irradiance:1000W/㎡, Module temperature:25°C



CHINA SOLAR

CHINA SOLAR LTD

Green Energy

Photovoltaic Glass

Green Economy

Long Black Solar Panel



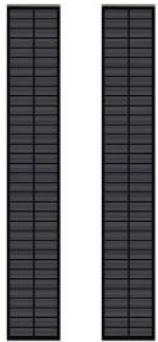
- Maximum Power(Pm): 3W
- Operating Voltage(Vmp): 9V
- Operating Current(Imp): 333mA
- Dimension: 310x70x4.5mm
- Model No.: KS-M31070GB



- Maximum Power(Pm): 4.8W
- Operating Voltage(Vmp): 8V
- Operating Current(Imp): 600mA
- Dimension: 390x80x4.5mm
- Model No.: KS-M39080GB



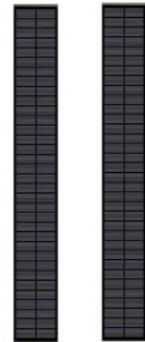
- Maximum Power(Pm): 6W
- Operating Voltage(Vmp): 8V
- Operating Current(Imp): 825mA
- Dimension: 490x80x4.5mm
- Model No.: KS-M49080GB



- Maximum Power(Pm): 6.5W
- Operating Voltage(Vmp): 18V
- Operating Current(Imp): 361mA
- Dimension: 535x85x4.5mm
- Model No.: KS-M53585GB



- Maximum Power(Pm): 3.24W
- Operating Voltage(Vmp): 18V
- Operating Current(Imp): 180mA
- Dimension: 500x50x4.5mm
- Model No.: KS-M50050GB



- Maximum Power(Pm): 4W
- Operating Voltage(Vmp): 18V
- Operating Current(Imp): 222mA
- Dimension: 500x65x4.5mm
- Model No.: KS-M50065GB

Product Description:

Photovoltaic solar panel with high transmittance, high strength and durability.

Cell Type: Monocrystalline solar cells.

Encapsulation Methods: Photovoltaic Glass, White Coated

Glass thickness: 3.2mm, Low iron, Coated Tempered Glass.

Operation life: 15 years - 20 years

Standard test conditions(STC): AM1.5, Irradiance:1000W/m², Module temperature:25°C

CHINA SOLAR LTD

Email: market@solars-china.com

Website: www.solars-china.com

TEL: +86 755 83515659

Green Energy

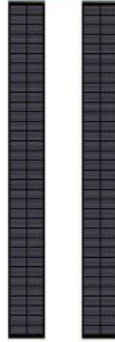
Green Economy

Professional Manufacturer of Solar Panel

Long Black Solar Panel



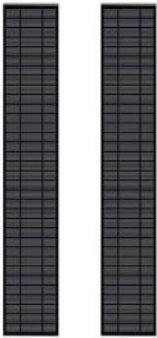
- Maximum Power(Pm): 3.5W
- Operating Voltage(Vmp): 18V
- Operating Current(Imp): 194mA
- Dimension: 600x50x5mm
- Model No.: KS-M60050GB



- Maximum Power(Pm): 5W
- Operating Voltage(Vmp): 18V
- Operating Current(Imp): 278mA
- Dimension: 600x65x4.5mm
- Model No.: KS-M60065GB



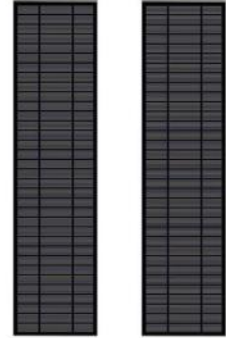
- Maximum Power(Pm): 7.8W
- Operating Voltage(Vmp): 12V
- Operating Current(Imp): 650mA
- Dimension: 600x80x4.5mm
- Model No.: KS-M60080GB



- Maximum Power(Pm): 8.7W
- Operating Voltage(Vmp): 12V
- Operating Current(Imp): 722mA
- Dimension: 600x100x4.5mm
- Model No.: KS-M600100GB



- Maximum Power(Pm): 10W
- Operating Voltage(Vmp): 18V
- Operating Current(Imp): 556mA
- Dimension: 600x120x4.5mm
- Model No.: KS-M600120GB



- Maximum Power(Pm): 13W
- Operating Voltage(Vmp): 18V
- Operating Current(Imp): 722mA
- Dimension: 600x150x4.5mm
- Model No.: KS-M600150GB

Product Description:

Photovoltaic solar panel with high transmittance, high strength and durability.

Cell Type: Monocrystalline solar cells.

Encapsulation Methods: Photovoltaic Glass, White Coated

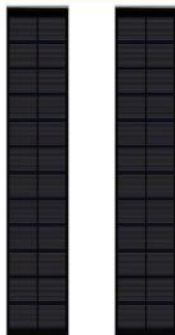
Glass thickness: 3.2mm, Low iron, Coated Tempered Glass.

Operation life: 15 years - 20 years

Standard test conditions(STC): AM1.5, Irradiance:1000W/m², Module temperature:25°C

Photovoltaic Glass

Long Black Solar Panel



- Maximum Power(Pm): 1.12W
- Operating Voltage(Vmp): 6V
- Operating Current(Imp): 186mA
- Dimension: 212x40x4.5mm
- Model No.: KS-M21240GB



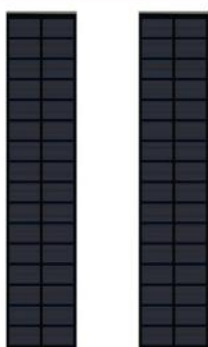
- Maximum Power(Pm): 1.7W
- Operating Voltage(Vmp): 6V
- Operating Current(Imp): 281mA
- Dimension: 212x60x4.5mm
- Model No.: KS-M21260GB



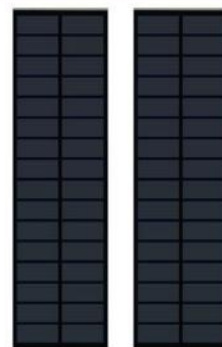
- Maximum Power(Pm): 2.8W
- Operating Voltage(Vmp): 9V
- Operating Current(Imp): 311mA
- Dimension: 260x80x4.5mm
- Model No.: KS-M26080GB



- Maximum Power(Pm): 3.2W
- Operating Voltage(Vmp): 6V
- Operating Current(Imp): 533mA
- Dimension: 280x80x4.5mm
- Model No.: KS-M28080GB



- Maximum Power(Pm): 2.5W
- Operating Voltage(Vmp): 8V
- Operating Current(Imp): 313mA
- Dimension: 290x60x4.5mm
- Model No.: KS-M29060GB



- Maximum Power(Pm): 3.5W
- Operating Voltage(Vmp): 8V
- Operating Current(Imp): 438mA
- Dimension: 290x80x4.5mm
- Model No.: KS-M29080GB

Product Description:

Photovoltaic solar panel with high transmittance, high strength and durability.

Cell Type: Monocrystalline solar cells.

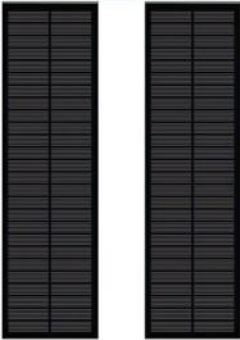
Encapsulation Methods: Photovoltaic Glass, White Coated

Glass thickness: 3.2mm, Low iron, Coated Tempered Glass.

Operation life: 15 years - 20 years

Standard test conditions(STC): AM1.5, Irradiance:1000W/㎡, Module temperature:25°C

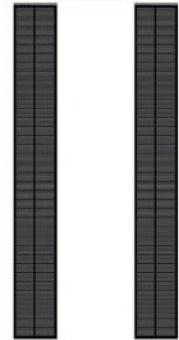
Long Black Solar Panel



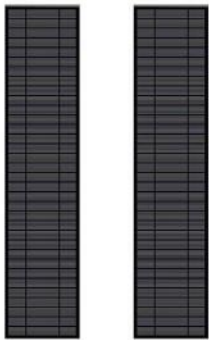
- Maximum Power(Pm): 2.5W
- Operating Voltage(Vmp): 18V
- Operating Current(Imp): 192mA
- Dimension: 300x85x5mm
- Model No.: KS-M30085GB



- Maximum Power(Pm): 5W
- Operating Voltage(Vmp): 13V
- Operating Current(Imp): 385mA
- Dimension: 460x98x4.5mm
- Model No.: KS-M46098GB



- Maximum Power(Pm): 10W
- Operating Voltage(Vmp): 18V
- Operating Current(Imp): 556mA
- Dimension: 770x100x4.5mm
- Model No.: KS-M770100GB



- Maximum Power(Pm): 20W
- Operating Voltage(Vmp): 18V
- Operating Current(Imp): 1.11A
- Dimension: 750x168x4.5mm
- Model No.: KS-M750168GB



- Maximum Power(Pm): 21.5W
- Operating Voltage(Vmp): 18V
- Operating Current(Imp): 1.19A
- Dimension: 950x150x4.5mm
- Model No.: KS-M950150GB



- Maximum Power(Pm): 25W
- Operating Voltage(Vmp): 18V
- Operating Current(Imp): 1.39A
- Dimension: 1000x168x4.5mm
- Model No.: KS-M1000168GB

Product Description:

Photovoltaic solar panel with high transmittance, high strength and durability.

Cell Type: Monocrystalline solar cells.

Encapsulation Methods: Photovoltaic Glass, White Coated

Glass thickness: 3.2mm, Low iron, Coated Tempered Glass.

Operation life: 15 years - 20 years

Standard test conditions(STC): AM1.5, Irradiance:1000W/㎡, Module temperature:25°C



Professional Manufacturer of Solar Panel

CHINA SOLAR LTD

Green Economy

Green Energy

Company Profile

China Solar Ltd is a Chinese solar panel manufacturer with exclusive production capabilities, founded in 2006. We have a flexible and agile production line, providing unique solar customized solution design and development.

After nearly 20 years of R&D and production, combine experience and innovative thinking, seek innovation in every step and every project, and grow into one of the most flexible solar manufacturers in the world.

We constantly innovate to deliver latest photovoltaics technologies to our production and to adapt to changing needs of solar market. Our design and development team will assist through all stages of project development: from design sketch to working prototype and series production.

We stick to strict quality control, from raw material sourcing, manufacturing process to finished product testing, we pay attention to details in each step, to provide customers with high-quality solar panels.

If you need further information, please feel free to contact us at any time. China Solar Ltd will become your most trusted partner with rich industry experience and professional technology.

 **Email: market@solars-china.com**

 **Website: www.solars-china.com**

 **TEL: +86 755 83515659**

CHINA SOLAR LTD

Email: market@solars-china.com

Website: www.solars-china.com

TEL: +86 755 83515659

Green Energy

Green Economy

Designer and Manufacturer of Solar Panel