



Professional Manufacturer of Solar Panel

CHINA SOLAR LTD

Green Economy

Green Energy

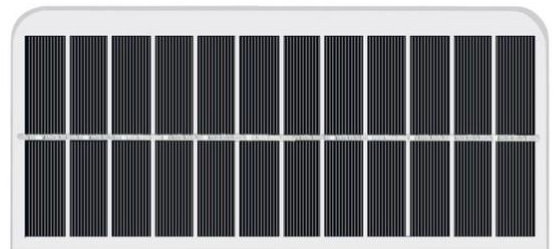
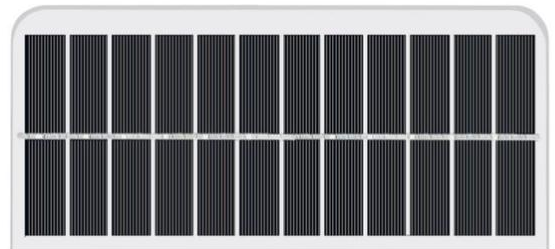
Photovoltaic Glass Solar Panel

Photovoltaic glass solar panel is built with the latest most efficient monocrystalline silicon solar cell, with high light transmittance, high strength and durability.

Photovoltaic glass solar panels are ideal for use in Industrial or agricultural applications, such as lighting system, navigation light, billboard, educational kits, agricultural irrigation, electronic devices and smart devices etc.

We provide custom solar panel services: can customize parameters, customized sizes, customized shapes, customized colors to meet the aesthetic needs of the product.

Professional Technical Team, nearly 20 years of industry experience, your reliable partner - China Solar Ltd.



CHINA SOLAR LTD

Email: market@solars-china.com

Website: www.solars-china.com

TEL: +86 755 83515659

Green Energy

Green Economy

Designer and Manufacturer of Solar Panel



CHINA SOLAR

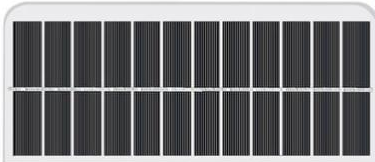
CHINA SOLAR LTD

Green Energy

Photovoltaic Glass

Green Economy

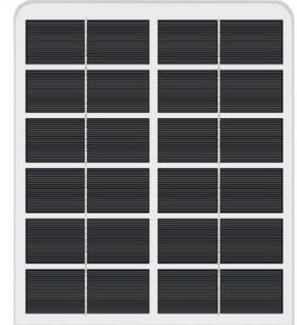
Solar Panel



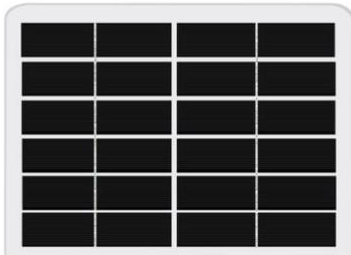
- Maximum Power(Pm): 2.6W
- Operating Voltage(Vmp): 6V
- Operating Current(Imp): 436mA
- Dimension: 212x90x4.5mm
- Model No.: KS-M21290G



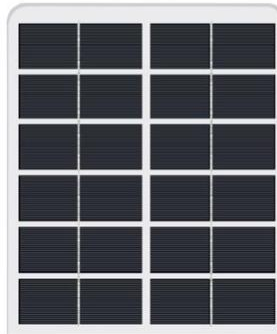
- Maximum Power(Pm): 1.16W
- Operating Voltage(Vmp): 4V
- Operating Current(Imp): 290mA
- Dimension: 132x111x4.5mm
- Model No.: KS-M132111G



- Maximum Power(Pm): 4.7W
- Operating Voltage(Vmp): 6V
- Operating Current(Imp): 784mA
- Dimension: 205x175x4.5mm
- Model No.: KS-M205175G



- Maximum Power(Pm): 3.4W
- Operating Voltage(Vmp): 6V
- Operating Current(Imp): 567mA
- Dimension: 185x135x4.5mm
- Model No.: KS-M185135G



- Maximum Power(Pm): 4W
- Operating Voltage(Vmp): 6V
- Operating Current(Imp): 667mA
- Dimension: 185x155x4.5mm
- Model No.: KS-M185155G



- Maximum Power(Pm): 2.25W
- Operating Voltage(Vmp): 4V
- Operating Current(Imp): 564mA
- Dimension: 129x124x4.5mm
- Model No.: KS-M129124G

Product Description:

Photovoltaic solar panel with high transmittance, high strength and durability.

Cell Type: Monocrystalline solar cells.

Encapsulation Methods: Photovoltaic Glass, White Coated

Glass thickness: 3.2mm, Low iron, Coated Tempered Glass.

Operation life: 15 years - 20 years

Standard test conditions(STC): AM1.5, Irradiance:1000W/m², Module temperature:25°C

CHINA SOLAR LTD

Email: market@solars-china.com

Website: www.solars-china.com

TEL: +86 755 83515659

Green Energy

Green Economy

Professional Manufacturer of Solar Panel

Photovoltaic Glass

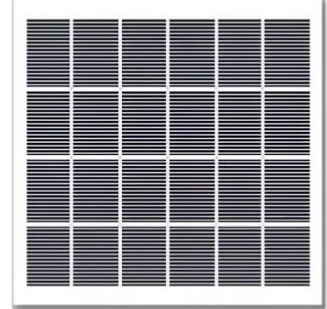
Solar Panel



- Maximum Power(Pm): 3W
- Operating Voltage(Vmp): 9V
- Operating Current(Imp): 333mA
- Dimension: 170x150x4.5mm
- Model No.: KS-M170150G



- Maximum Power(Pm): 2W
- Operating Voltage(Vmp): 4V
- Operating Current(Imp): 500mA
- Dimension: 125x125x4.5mm
- Model No.: KS-M125125G



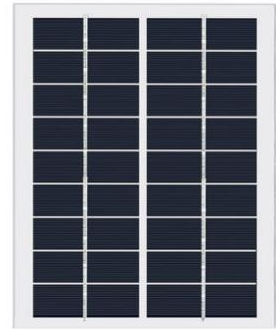
- Maximum Power(Pm): 5W
- Operating Voltage(Vmp): 6V
- Operating Current(Imp): 833mA
- Dimension: 200x200x4.5mm
- Model No.: KS-M200200G



- Maximum Power(Pm): 3.4W
- Operating Voltage(Vmp): 9V
- Operating Current(Imp): 378mA
- Dimension: 195x125x4.5mm
- Model No.: KS-M195125G



- Maximum Power(Pm): 3.18W
- Operating Voltage(Vmp): 12V
- Operating Current(Imp): 265mA
- Dimension: 188x132x4.5mm
- Model No.: KS-M188132G



- Maximum Power(Pm): 4W
- Operating Voltage(Vmp): 9V
- Operating Current(Imp): 444mA
- Dimension: 200x160x4.5mm
- Model No.: KS-M200160G

Product Description:

Photovoltaic solar panel with high transmittance, high strength and durability.

Cell Type: Monocrystalline solar cells.

Encapsulation Methods: Photovoltaic Glass, White Coated

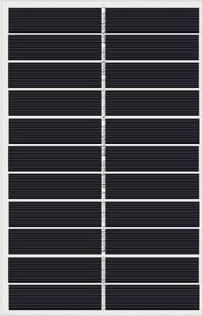
Glass thickness: 3.2mm, Low iron, Coated Tempered Glass.

Operation life: 15 years - 20 years

Standard test conditions(STC): AM1.5, Irradiance:1000W/m², Module temperature:25°C

Photovoltaic Glass

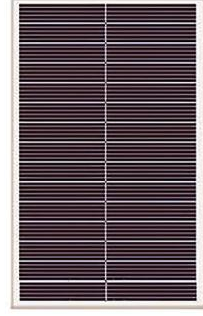
Solar Panel



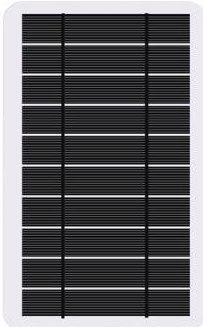
- Maximum Power(Pm): 1.06W
- Operating Voltage(Vmp): 5.5V
- Operating Current(Imp): 193mA
- Dimension: 120x78x4.5mm
- Model No.: KS-M12078G



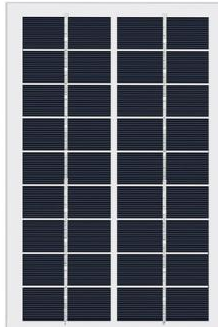
- Maximum Power(Pm): 1.7W
- Operating Voltage(Vmp): 5.5V
- Operating Current(Imp): 309mA
- Dimension: 145x90x4.5mm
- Model No.: KS-M14590G



- Maximum Power(Pm): 2W
- Operating Voltage(Vmp): 18V
- Operating Current(Imp): 111mA
- Dimension: 190x100x4.5mm
- Model No.: KS-M190100G



- Maximum Power(Pm): 2W
- Operating Voltage(Vmp): 5V
- Operating Current(Imp): 400mA
- Dimension: 157x94x4.5mm
- Model No.: KS-M15794G



- Maximum Power(Pm): 2.85W
- Operating Voltage(Vmp): 9V
- Operating Current(Imp): 317mA
- Dimension: 180x120x4.5mm
- Model No.: KS-M180120G



- Maximum Power(Pm): 6W
- Operating Voltage(Vmp): 5.5V
- Operating Current(Imp): 1.09A
- Dimension: 255x172x4.5mm
- Model No.: KS-M255172G

Product Description:

Photovoltaic solar panel with high transmittance, high strength and durability.

Cell Type: Monocrystalline solar cells.

Encapsulation Methods: Photovoltaic Glass, White Coated

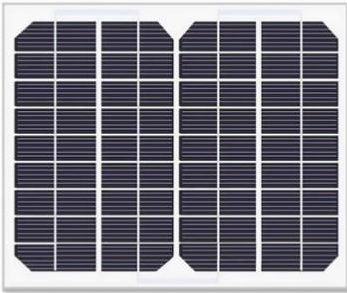
Glass thickness: 3.2mm, Low iron, Coated Tempered Glass.

Operation life: 15 years - 20 years

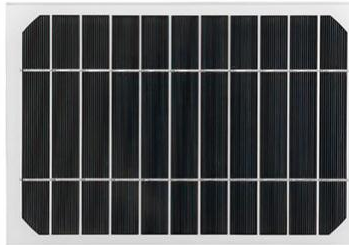
Standard test conditions(STC): AM1.5, Irradiance:1000W/m², Module temperature:25°C

Photovoltaic Glass

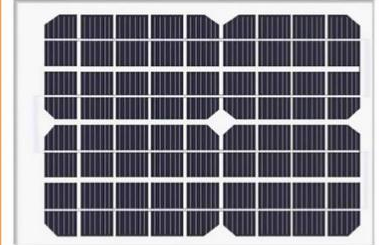
Solar Panel



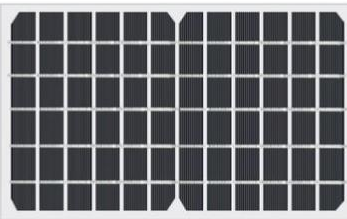
- Maximum Power(Pm): 5W
- Operating Voltage(Vmp): 18V
- Operating Current(Imp): 277mA
- Dimension: 240x195x4.5mm
- Model No.: KS-M240195G



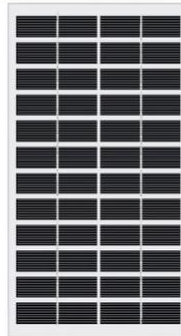
- Maximum Power(Pm): 6.2W
- Operating Voltage(Vmp): 5.5V
- Operating Current(Imp): 1.13A
- Dimension: 265x185x4.5mm
- Model No.: KS-M265185G



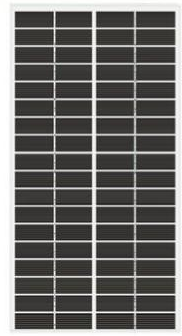
- Maximum Power(Pm): 10W
- Operating Voltage(Vmp): 18V
- Operating Current(Imp): 556mA
- Dimension: 240x365x4.5mm
- Model No.: KS-M240365G



- Maximum Power(Pm): 7W
- Operating Voltage(Vmp): 6V
- Operating Current(Imp): 1.17A
- Dimension: 285x176x4.5mm
- Model No.: KS-M285176G



- Maximum Power(Pm): 5.35W
- Operating Voltage(Vmp): 12V
- Operating Current(Imp): 446mA
- Dimension: 280x150x4.5mm
- Model No.: KS-M280150G



- Maximum Power(Pm): 2.8W
- Operating Voltage(Vmp): 18V
- Operating Current(Imp): 156mA
- Dimension: 210x110x4.5mm
- Model No.: KS-M210110G

Product Description:

Photovoltaic solar panel with high transmittance, high strength and durability.

Cell Type: Monocrystalline solar cells.

Encapsulation Methods: Photovoltaic Glass, White Coated

Glass thickness: 3.2mm, Low iron, Coated Tempered Glass.

Operation life: 15 years - 20 years

Standard test conditions(STC): AM1.5, Irradiance:1000W/m², Module temperature:25°C



CHINA SOLAR

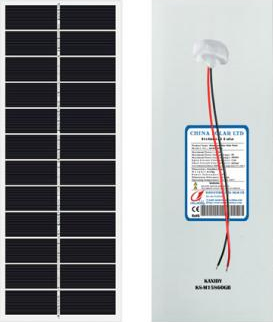
CHINA SOLAR LTD

Green Energy

Green Economy

Photovoltaic Glass

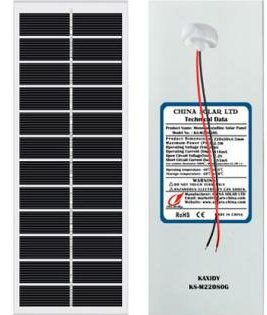
Solar Panel



- Maximum Power(Pm): 1.25W
- Operating Voltage(Vmp): 6V
- Operating Current(Imp): 208mA
- Dimension: 158x60x4.5mm
- Model No.: KS-M15860G



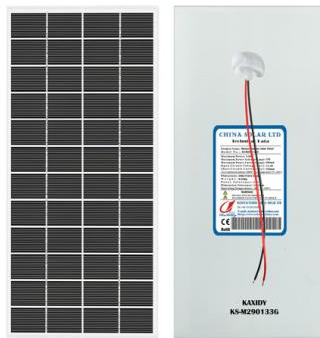
- Maximum Power(Pm): 0.75W
- Operating Voltage(Vmp): 6V
- Operating Current(Imp): 125mA
- Dimension: 158x40x4.5mm
- Model No.: KS-M15840G



- Maximum Power(Pm): 2.5W
- Operating Voltage(Vmp): 6V
- Operating Current(Imp): 417mA
- Dimension: 220x80x4.5mm
- Model No.: KS-M22080G



- Maximum Power(Pm): 3.2W
- Operating Voltage(Vmp): 6V
- Operating Current(Imp): 533mA
- Dimension: 280x80x4.5mm
- Model No.: KS-M28080G



- Maximum Power(Pm): 5.93W
- Operating Voltage(Vmp): 12V
- Operating Current(Imp): 494mA
- Dimension: 290x133x4.5mm
- Model No.: KS-M290133G



- Maximum Power(Pm): 4.45W
- Operating Voltage(Vmp): 12V
- Operating Current(Imp): 371mA
- Dimension: 300x100x4.5mm
- Model No.: KS-M300100G

Product Description:

Photovoltaic solar panel with high transmittance, high strength and durability.

Cell Type: Monocrystalline solar cells.

Encapsulation Methods: Photovoltaic Glass, White Coated

Glass thickness: 3.2mm, Low iron, Coated Tempered Glass.

Operation life: 15 years - 20 years

Standard test conditions(STC): AM1.5, Irradiance:1000W/m², Module temperature:25°C

CHINA SOLAR LTD

Email: market@solars-china.com

Website: www.solars-china.com

TEL: +86 755 83515659

Green Energy

Green Economy

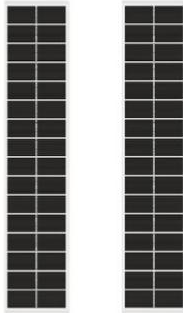
Professional Manufacturer of Solar Panel

Green Energy

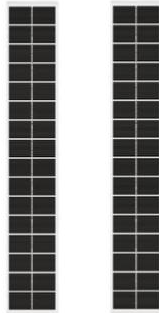
Green Economy

Photovoltaic Glass

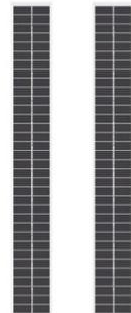
Long Strip Solar Panel



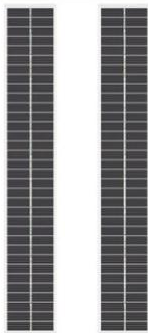
- Maximum Power(Pm): 4.86W
- Operating Voltage(Vmp): 8V
- Operating Current(Imp): 607mA
- Dimension: 390x80x4.5mm
- Model No.: KS-M39080G



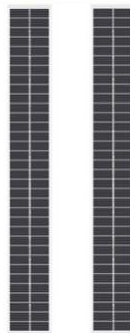
- Maximum Power(Pm): 6.22W
- Operating Voltage(Vmp): 8V
- Operating Current(Imp): 778mA
- Dimension: 490x80x4.5mm
- Model No.: KS-M49080G



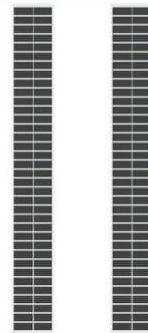
- Maximum Power(Pm): 4W
- Operating Voltage(Vmp): 18V
- Operating Current(Imp): 222mA
- Dimension: 500x65x4.5mm
- Model No.: KS-M50065G



- Maximum Power(Pm): 6.5W
- Operating Voltage(Vmp): 18V
- Operating Current(Imp): 361mA
- Dimension: 535x85x4.5mm
- Model No.: KS-M53585G



- Maximum Power(Pm): 6W
- Operating Voltage(Vmp): 18V
- Operating Current(Imp): 333mA
- Dimension: 600x80x4.5mm
- Model No.: KS-M60080G



- Maximum Power(Pm): 10W
- Operating Voltage(Vmp): 18V
- Operating Current(Imp): 556mA
- Dimension: 770x100x4.5mm
- Model No.: KS-M770100G

Product Description:

Photovoltaic solar panel with high transmittance, high strength and durability.

Cell Type: Monocrystalline solar cells.

Encapsulation Methods: Photovoltaic Glass, White Coated

Glass thickness: 3.2mm, Low iron, Coated Tempered Glass.

Operation life: 15 years - 20 years

Standard test conditions(STC): AM1.5, Irradiance:1000W/m², Module temperature:25°C

Green Energy

Green Economy

CHINA SOLAR LTD

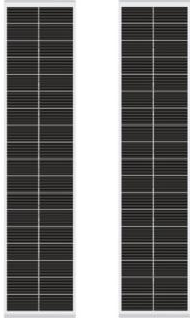
Email: market@solars-china.com

Website: www.solars-china.com

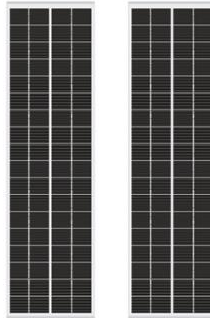
TEL: +86 755 83515659

Photovoltaic Glass

Long Strip Solar Panel



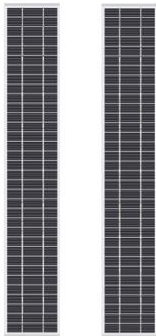
- Maximum Power(Pm): 3W
- Operating Voltage(Vmp): 9V
- Operating Current(Imp): 333mA
- Dimension: 310x70x4.5mm
- Model No.: KS-M31070G



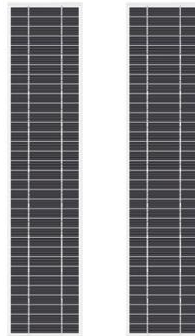
- Maximum Power(Pm): 4W
- Operating Voltage(Vmp): 9V
- Operating Current(Imp): 444mA
- Dimension: 359x100x4.5mm
- Model No.: KS-M359100G



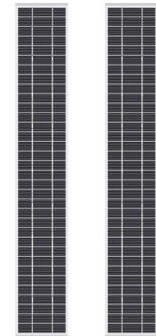
- Maximum Power(Pm): 6W
- Operating Voltage(Vmp): 18V
- Operating Current(Imp): 333mA
- Dimension: 500x100x4.5mm
- Model No.: KS-M500100G



- Maximum Power(Pm): 7.5W
- Operating Voltage(Vmp): 18V
- Operating Current(Imp): 417mA
- Dimension: 600x100x4.5mm
- Model No.: KS-M600100G



- Maximum Power(Pm): 20W
- Operating Voltage(Vmp): 18V
- Operating Current(Imp): 1.11A
- Dimension: 750x168x4.5mm
- Model No.: KS-M750168G



- Maximum Power(Pm): 21.5W
- Operating Voltage(Vmp): 18V
- Operating Current(Imp): 1.19A
- Dimension: 950x150x4.5mm
- Model No.: KS-M950150G

Product Description:

Photovoltaic solar panel with high transmittance, high strength and durability.

Cell Type: Monocrystalline solar cells.

Encapsulation Methods: Photovoltaic Glass, White Coated

Glass thickness: 3.2mm, Low iron, Coated Tempered Glass.

Operation life: 15 years - 20 years

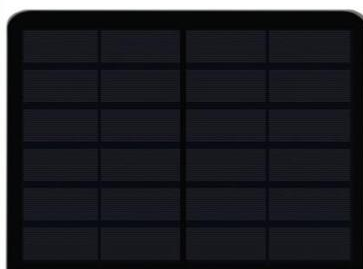
Standard test conditions(STC): AM1.5, Irradiance:1000W/m², Module temperature:25°C

Photovoltaic Glass

Black Solar Panel



- Maximum Power(Pm): 2.8W
- Operating Voltage(Vmp): 6V
- Operating Current(Imp): 466mA
- Dimension: 215x92x4.5mm
- Model No.: KS-M21592GB



- Maximum Power(Pm): 3.4W
- Operating Voltage(Vmp): 6V
- Operating Current(Imp): 567mA
- Dimension: 185x135x4.5mm
- Model No.: KS-M185135GB



- Maximum Power(Pm): 3.75W
- Operating Voltage(Vmp): 6V
- Operating Current(Imp): 625mA
- Dimension: 190x135x4.5mm
- Model No.: KS-M190138GB



- Maximum Power(Pm): 2.9W
- Operating Voltage(Vmp): 5V
- Operating Current(Imp): 580mA
- Dimension: 188x140x4.5mm
- Model No.: KS-M188140GB



- Maximum Power(Pm): 4W
- Operating Voltage(Vmp): 6V
- Operating Current(Imp): 667mA
- Dimension: 185x155x4.5mm
- Model No.: KS-M185155G



- Maximum Power(Pm): 4.7W
- Operating Voltage(Vmp): 6V
- Operating Current(Imp): 784mA
- Dimension: 205x175x4.5mm
- Model No.: KS-M205175GB

Product Description:

Photovoltaic solar panel with high transmittance, high strength and durability.

Cell Type: Monocrystalline solar cells.

Encapsulation Methods: Photovoltaic Glass, Black Coated

Glass thickness: 3.2mm, Low iron, Coated Tempered Glass.

Operation life: 15 years - 20 years

Standard test conditions(STC): AM1.5, Irradiance:1000W/m², Module temperature:25°C



CHINA SOLAR

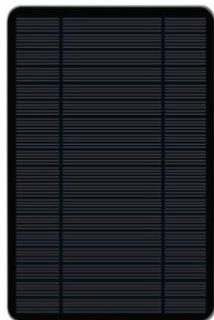
CHINA SOLAR LTD

Green Energy

Green Economy

Photovoltaic Glass

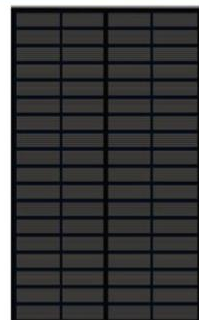
Black Solar Panel



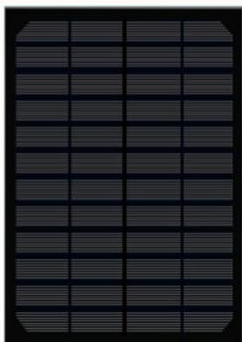
- Maximum Power(Pm): 3.4W
- Operating Voltage(Vmp): 9V
- Operating Current(Imp): 378mA
- Dimension: 195x125x4.5mm
- Model No.: KS-M195125GB



- Maximum Power(Pm): 2W
- Operating Voltage(Vmp): 5V
- Operating Current(Imp): 400mA
- Dimension: 157x94x4.5mm
- Model No.: KS-M15794GB



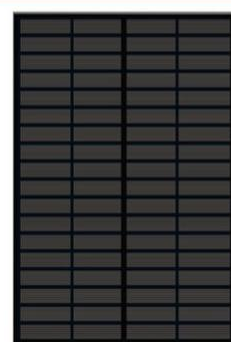
- Maximum Power(Pm): 6W
- Operating Voltage(Vmp): 18V
- Operating Current(Imp): 333mA
- Dimension: 275x166x4.5mm
- Model No.: KS-M275166GB



- Maximum Power(Pm): 3.18W
- Operating Voltage(Vmp): 12V
- Operating Current(Imp): 265mA
- Dimension: 188x132x4.5mm
- Model No.: KS-M188132GB



- Maximum Power(Pm): 6W
- Operating Voltage(Vmp): 5.5V
- Operating Current(Imp): 1.09A
- Dimension: 255x172x4.5mm
- Model No.: KS-M255172GB



- Maximum Power(Pm): 8.5W
- Operating Voltage(Vmp): 18V
- Operating Current(Imp): 472mA
- Dimension: 302x202x4.5mm
- Model No.: KS-M302202GB

Product Description:

Photovoltaic solar panel with high transmittance, high strength and durability.

Cell Type: Monocrystalline solar cells.

Encapsulation Methods: Photovoltaic Glass, Black Coated

Glass thickness: 3.2mm, Low iron, Coated Tempered Glass.

Operation life: 15 years - 20 years

Standard test conditions(STC): AM1.5, Irradiance:1000W/㎡, Module temperature:25°C

CHINA SOLAR LTD

Email: market@solars-china.com

Website: www.solars-china.com

TEL: +86 755 83515659

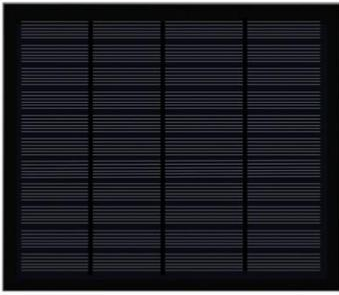
Green Energy

Green Economy

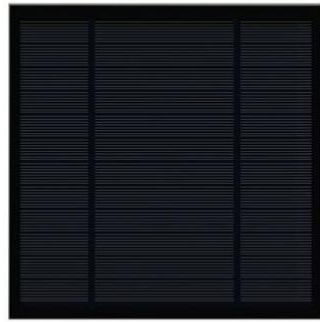
Professional Manufacturer of Solar Panel

Photovoltaic Glass

Black Solar Panel



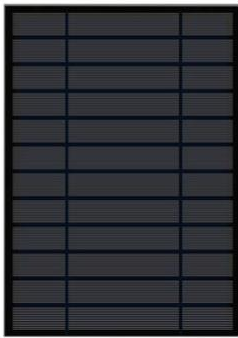
- Maximum Power(Pm): 3.5W
- Operating Voltage(Vmp): 5.5V
- Operating Current(Imp): 636mA
- Dimension: 170x145x4.5mm
- Model No.: KS-M170145GB



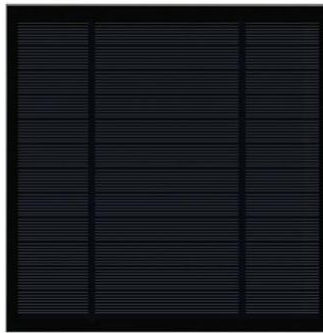
- Maximum Power(Pm): 1.14W
- Operating Voltage(Vmp): 6V
- Operating Current(Imp): 190mA
- Dimension: 100x100x4.5mm
- Model No.: KS-M100100GB



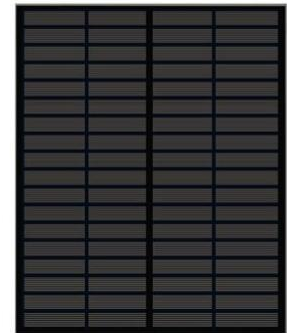
- Maximum Power(Pm): 5.1W
- Operating Voltage(Vmp): 6V
- Operating Current(Imp): 850mA
- Dimension: 156x156x4.5mm
- Model No.: KS-M156156GB



- Maximum Power(Pm): 2.38W
- Operating Voltage(Vmp): 12V
- Operating Current(Imp): 198mA
- Dimension: 155x110x4.5mm
- Model No.: KS-M155110GB



- Maximum Power(Pm): 5.1W
- Operating Voltage(Vmp): 6V
- Operating Current(Imp): 850mA
- Dimension: 200x200x4.5mm
- Model No.: KS-M200200GB



- Maximum Power(Pm): 5.5W
- Operating Voltage(Vmp): 6V
- Operating Current(Imp): 917mA
- Dimension: 225x185x4.5mm
- Model No.: KS-M225185GB

Product Description:

Photovoltaic solar panel with high transmittance, high strength and durability.

Cell Type: Monocrystalline solar cells.

Encapsulation Methods: Photovoltaic Glass, Black Coated

Glass thickness: 3.2mm, Low iron, Coated Tempered Glass.

Operation life: 15 years - 20 years

Standard test conditions(STC): AM1.5, Irradiance:1000W/m², Module temperature:25°C